

SPOT-IT-PARK

ENTEF offers an integrated parking solution .

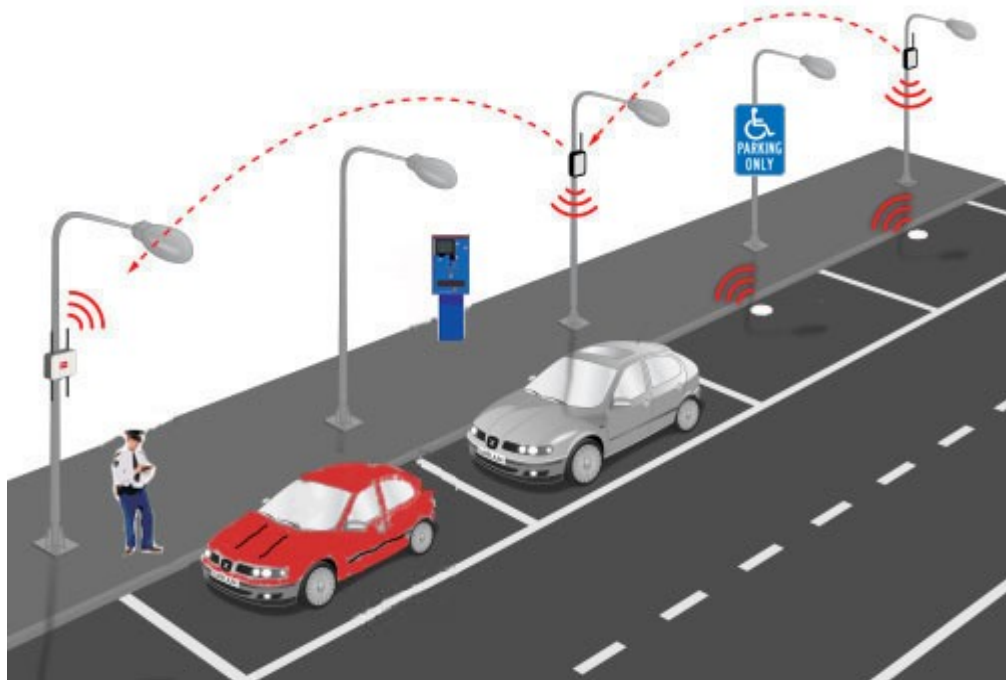
An important problem that concerns several Municipalities is the availability of parking spaces and the real-time information of the drivers for the empty parking spaces.

SPOT-IT-PARK offers an integrated parking solution that addresses to this exact problem.

SPOT-IT-PARK is a parking management system that offers an easy and quick way for the drivers to find available parking spaces while it gives Municipalities the opportunity to take advantage of their streets giving to the drivers and the Municipality significant benefits.

Products passed the CE certification and ROHS certification.

ENTEF promotes the quality products with best service and competitive price.



SPOT-IT-PARK

Sensors

Automatic vehicle detection

F6210 Communicate with Areal Controller by RF (2,4GHz)



on-street

The wireless system is a radio frequency network with integrated I/O that can operate in most environments and eliminate the need for wiring runs. Wireless networks are formed around a Areal Controller, which acts as the wireless network master device, and one or more Sensors.

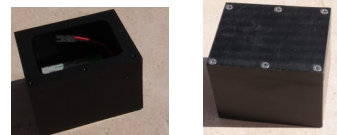
- Internal three-axis magnetoresistive-based technology senses three-dimensional changes to the Earth's magnetic field caused by the presence of ferrous objects
- Designed to minimize the effects of temperature changes and destabilizing magnetic fields
- Sensor learns ambient background and stores settings in non-volatile memory
- Technology power driven by lithium primary battery integrated into the housing
- Transceivers provide bidirectional communication between the Areal Controller and Sensors, including fully acknowledged data transmission
- Lost RF links are detected and relevant outputs set to user-defined conditions
- Sealed housing contains the power source, sensor, and antenna for a completely wireless solution.
- Selected housing contains the power source, sensor, and antenna, provide suitable installation for on-street montage, surface asphalt montage, paved road montage.



surface asphalt

Specifications

Signal distance: Open 100 meters
 Working Frequency: 2.4GHz
 Receiving sensitivity: ≤ -80 dBm
 Battery life: 5 years or 8 years
 Operating temperature: $-20^{\circ}\text{C} \sim +70^{\circ}\text{C}$
 Storage temperature: $-40^{\circ}\text{C} \sim +80^{\circ}\text{C}$
 Detection Range: 2m²
 Protection Class: IP67



paved road



Areal Controller

The wireless system is a radio frequency network with integrated I/O that can operate in most environments while eliminating the need for wiring runs. Systems are built around a Areal Controller, which acts as the wireless network master device, and one or more Sensor.

- Wireless industrial Areal Controller with a GSM/GPRS Modem and Solar panel
- Transceivers provide bidirectional communication between the Areal Controller and Sensors, including fully acknowledged data transmission
- Lost RF links are detected and relevant outputs set to user-defined conditions

Specifications

Working Frequency: 2.4GHz
 Receiving sensitivity: ≤ -80 dBm
 Operating temperature: $-20^{\circ}\text{C} \sim +70^{\circ}\text{C}$
 Storage temperature: $-40^{\circ}\text{C} \sim +80^{\circ}\text{C}$
 Frequency: GSM(850/900/1800/1900)
 Power: Battery & Solar

SPOT-IT-PARK

Sensors

Suitable enclosure for different kind of roads' coating and environment



Suitable sensors enclosure
for paved roads



Suitable sensors enclosure for
on-roads installation



Suitable sensors enclosure
for surface asphalt installation

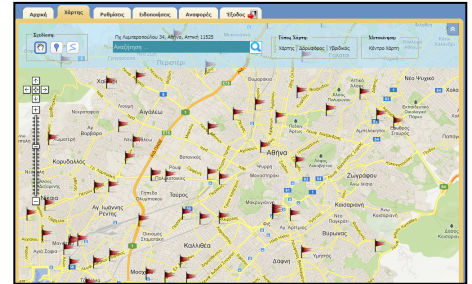
SPOT-IT-PARK

Website

A website is designed that will show all the parking lots empty or not.

The website is designed to assist the drivers to locate the nearest available parking space by indicating them on a street map and assist the municipalities by informing them of the occupied but not paid spaces.

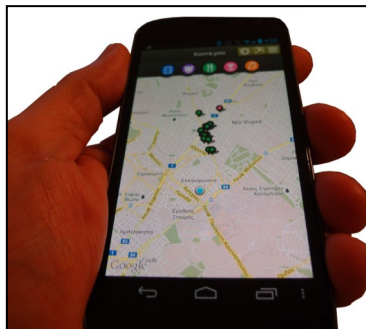
The website has special criteria (area, map, parking spaces, nearest payment machine) for the assistance of the drivers and the Municipality.



Parking spaces for the disabled are indicated with different color and have an additional criteria, these lots can be booked for a certain period of time by inserting only the license plate of the vehicle and the requested time.

www.parkmaps.de

Mobile Application



A mobile application for smart phones is designed and can be offered to the drivers.

The application recognizes the location of the driver and directs him to the nearest parking space.

The application has an additional feature for disabled drivers. It gives them the opportunity to book a parking space for a certain period of time.

Member Cards

The system can support different kind of member cards (prepaid, free, etc) for the needs of the Municipality and the Shopping Area.

A Shopping Area card can be released, where with each buy the shops can fill in their clients' parking card with free additional parking hours.

SPOT-IT-PARK



Sign Plates

The sign plates are placed near the street in visible spots so that they can inform the drivers for the available parking space.

Info Station

The Info Station, is fully compatible with the Parking Management System. Inform about free parking lots in hole area



SPOT-IT-PARK

Payment Terminal

The Pay On Foot Terminal, is fully compatible with the Parking Management System.

- **Touch screen Monitor**
 - **User friendly Interface**
 - **Acceptance Coins & banknote**
- ### Specification
- 2 mm Metallic body
 - Management Software for Configuration & Diagnostic
 - Security Alarm Control
 - Security Lock
 - Multi Language Interface
 - Acceptance Coins
 - Acceptance Banknote
 - Give Exchange Coins
 - Give Exchange Banknote
 - Receipt Thermal Printer
 - Manage Bar Code Ticket
 - Manage RF Cards

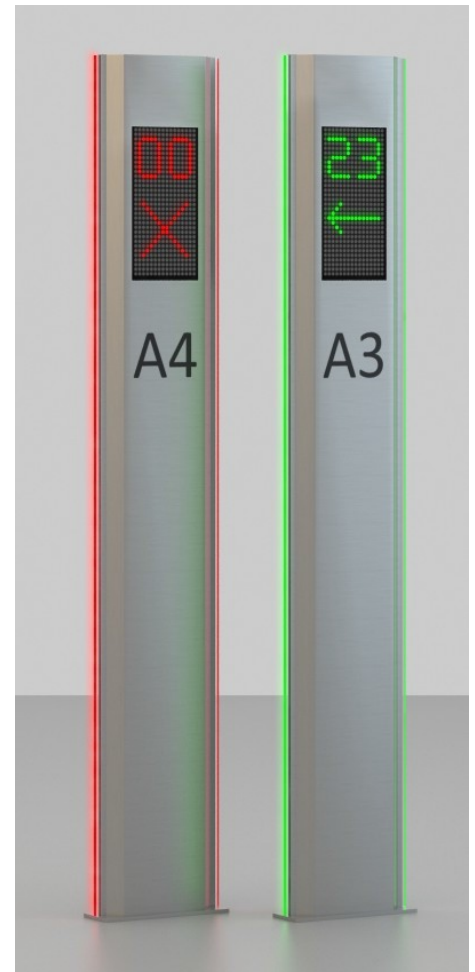


SPOT-IT-PARK

Info Terminal

Specification

- Metallic body
- Management Software for Configuration & Control
- RGB Display
- Communication Ethernet



ENTEF UG

Königsallee 61
Zip Code 40215
Düsseldorf
Germany

Phone: +49 21 42471338
Fax: +49 211 42471450
E-mail: info@entef.com
Site: www.entef.com